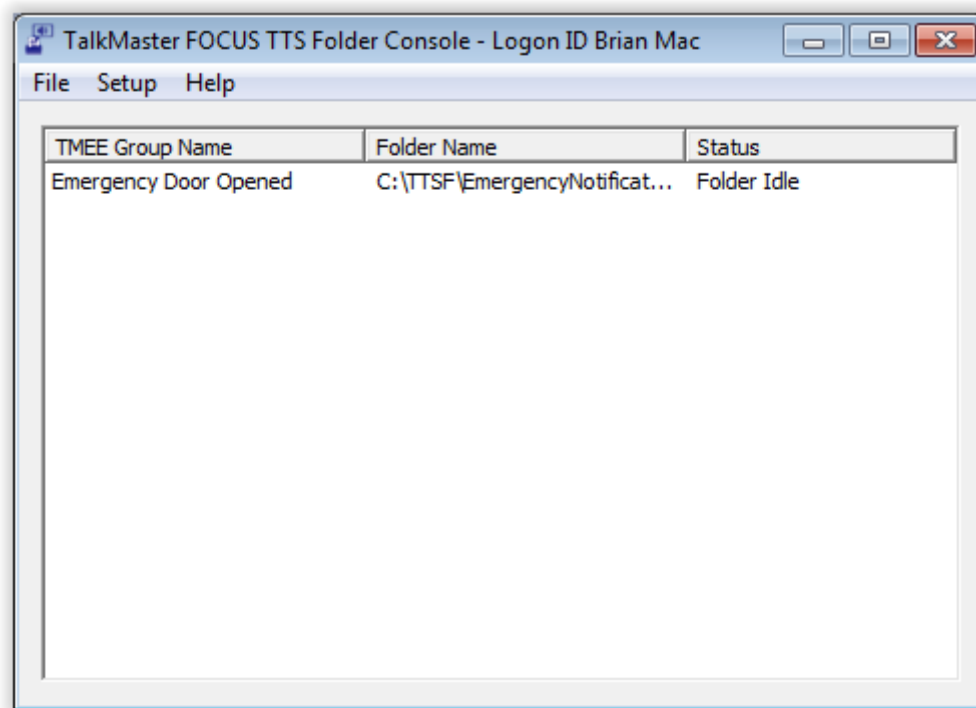


TalkMaster™ FOCUS

Text to Speech Folder Console Reference Manual



DIGITAL
ACOUSTICS

Table of Contents

Getting Started	1
Welcome.....	1
Release Notes	1
Preliminary Configuration Process	1
Logon.....	1
Overview.....	2
Setup and Configuration	5
Setup Group Folders	5
Preferences	7
Menu Options	9
File Menu Options	9
Setup Menu Options.....	9
Help Menu Options.....	9
Support Information.....	11
Contacting Technical Support	11
About Us.....	11
Index.....	13

Getting Started

Welcome

Welcome to the Text to Speech Folders Console (TTSF Console). TTSF is designed to monitor a folder location for files with the txt extension.. When a text file is discovered, it is sent to the TalkMaster Server along with the name of a Paging Group. The TalkMaster Server converts the text into speech and sends it to the Paging Group. This application is typically used to Interface the TalkMaster Server with other systems.

Release Notes

January 2012

- Updated to use the TalkMaster V3.0 SDK

December 2011

- Initial Release

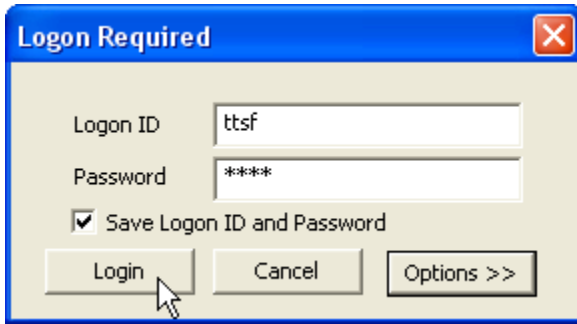
Preliminary Configuration Process

Configuration Steps

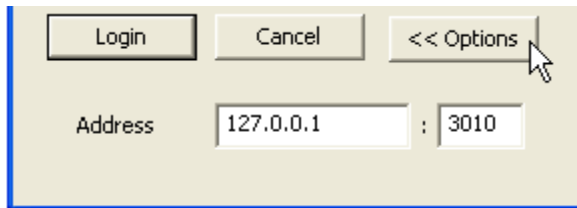
- Determine if the default Windows Text to Speech voice will be used or select and install a new Text to Speech voice. Make sure to reboot the Server after installation of a new Text to Speech voice
- In the TalkMaster Admin Console, on the **Setup --> File Locs** tab, make sure the correct Text to Speech voice is selected
- In the TalkMaster Admin Console on the "Paging Groups --> Endpoint Members" tab, create all Paging Groups that will be used by TTSFolders
- Run the TTSFolders Console installation program
- Logon to the TTSFolders Console using an Operator ID and password defined in the Admin Console and specify the IP Address of the TalkMaster Server. Check the box to "Save Logon ID and Password"

Logon

The Logon Required dialog is displayed when the TTSF Console is started. Logon using an Operator and password that has been defined in the Admin Console.



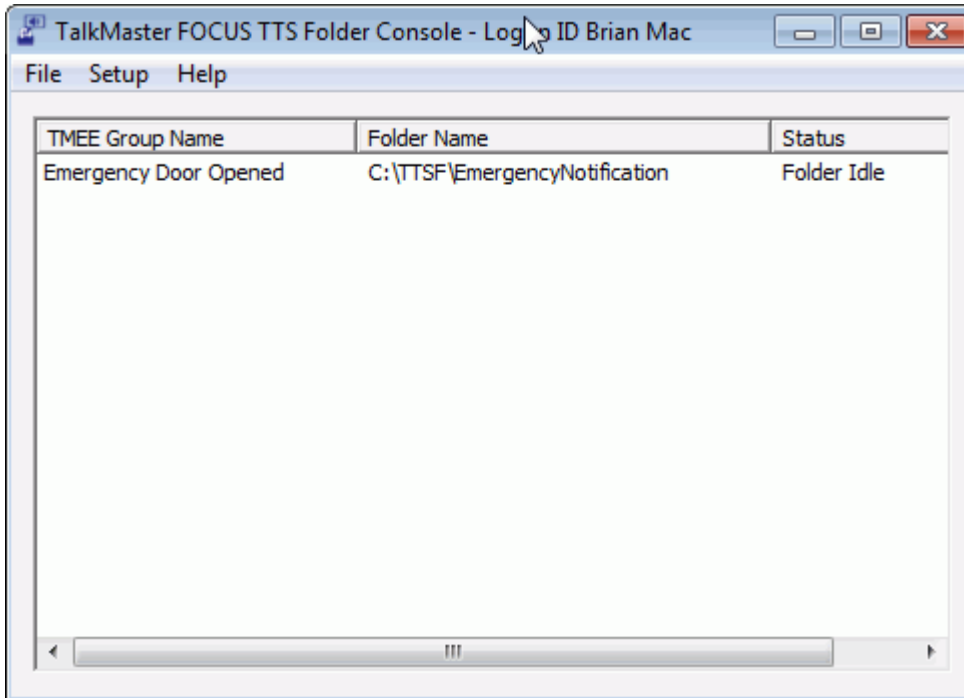
- **Logon ID** - Identifies the Operator defined to the TalkMaster Server through the Admin Console. An Operator can only be logged on to a single console at a time
- **Password** - Enter the Operator's password. This field is case sensitive.
- **Save Logon ID and Password** - check this box to save the logon information so the software can startup and logon automatically
- **Login** button - Click to process the login information
- **Cancel** button - Click to cancel the logon operation
- **Options** button - Click to toggle the display of the Address information



- **Address** - enter the IP address and Port used to connect to the TalkMaster Server. The port must match the Console Port defined in the **Setup --> Settings** sub tab of the Admin Console. Once the TalkMaster Server address has been entered, the **Address** will not be displayed. If TTSF runs on the same machine as the TalkMaster Server, specify the local loopback address of 127.0.0.1

Overview

TTSFolders is a TalkMaster Server Console application that reads text files from a folder, converts the text to speech, and then sends the audio to a predefined group of speakers.



When TTSF starts up and logs on to the TalkMaster Server, it receives all of the Paging Groups defined in the TalkMaster Admin Console. TTSF provides the ability to define a folder for each Paging Group that will be monitored for new files with an extension of .txt. TTSF inspects each directory based on the interval specified in the Polling Interval. If one or more text files are present, they are opened, the text up to the Delimiter String is transmitted to the TalkMaster Server, converted to speech and sent to the Paging Group associated with the folder. The text file is then deleted.

The TTSF must be running in order to process new information sent to folders. It normally runs in the Windows System Tray.

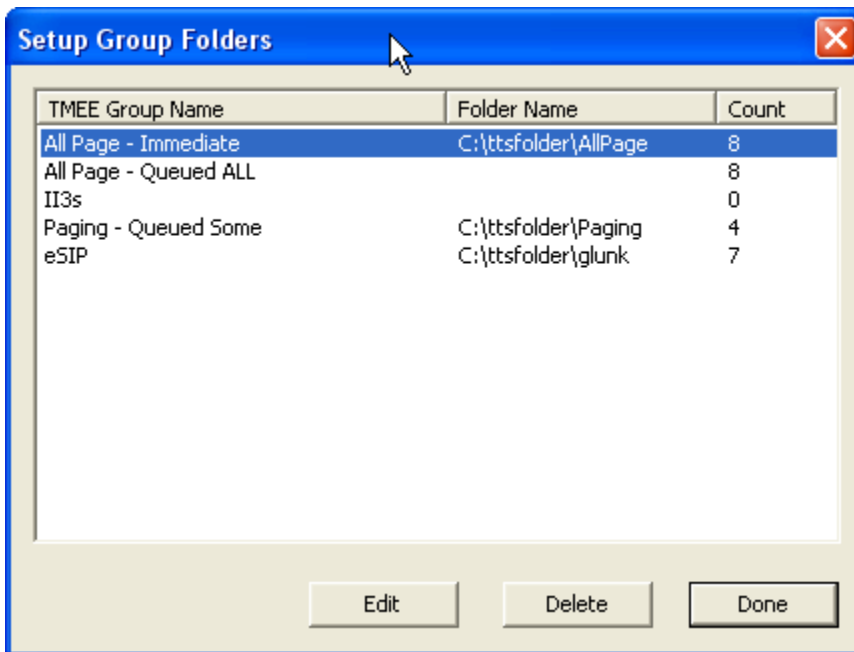
- **TMEE Group Name** - Name of a Paging Group defined to the TalkMaster Server
- **Folder Name** - Location of a local folder in the file system
- **Status** - Current status of the monitoring task. The status normally displays as **Folder Idle** and changes to **Checking Folder** when it is checking for new items

Setup and Configuration

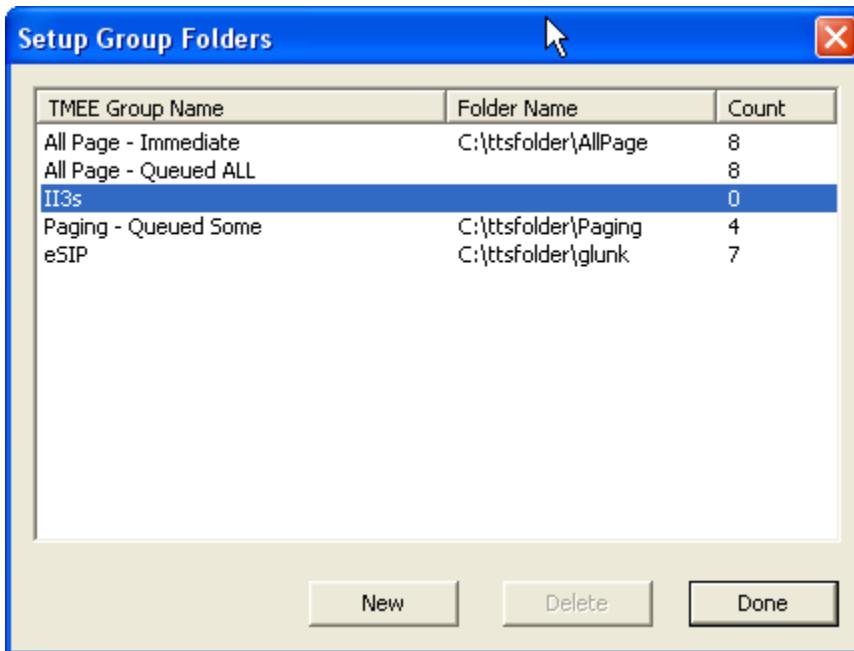
Setup Group Folders

The **Setup --> Folder Groups** menu option is used to assign a folder in the file system to a Paging Group.

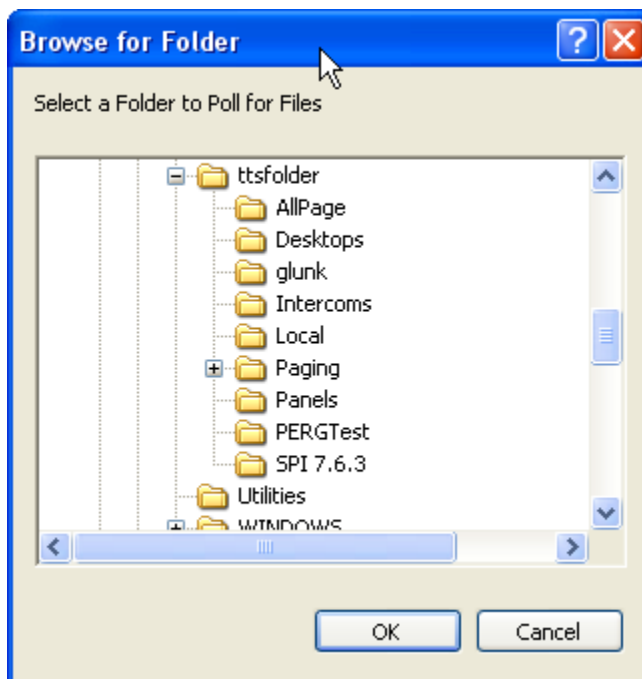
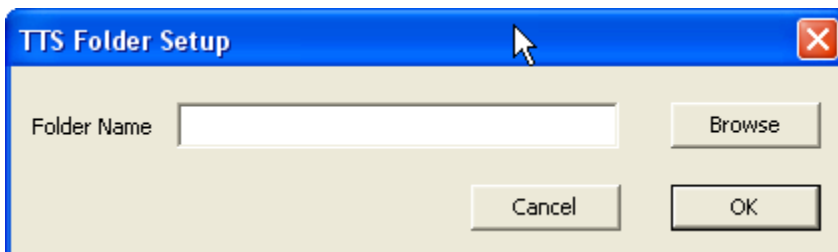
- Select menu option “Setup --> Folder Groups” and the Setup Group Folders dialog is presented. Any Paging Groups that are configured on the TalkMaster Server are listed.



- **TMEE Group Name** - The Paging Groups that are currently defined on the TalkMaster Server
- **Folder Name** - The name of the folder in the file system that is being monitored for files that have the txt extension
- **Count** - The number of times a file with the txt extension has been sent to the TalkMaster Server to be converted to speech
- To associate a folder with a Paging Group, click on a **TMEE Group Name** that is does not have a **Folder Name** Associated with it and click the **New** button. If a **Folder Name** is already associated with a **TMEE Group Name**, the **New** button changes to **Edit** and the **Delete** button becomes available



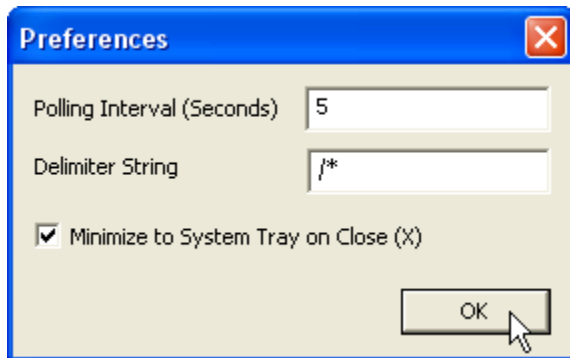
- The TTS Folder Setup dialog is presented. Enter the full path to the folder to be monitored or click the Browse button to select one from the **Browse for Folder** dialog, then click **OK**



Click the **Done** button when all changes have been made.

Preferences

Type topic text here.



- **Polling Interval** - The number of seconds TTTSF "sleeps" before checking the folders for files with the txt extension
- **Delimiter String** - Optionally enter a delimiter sting to be used. When a txt file is read, any text up to the Delimiter Sting is processed. In the following example, the text starting with the /* will not be delivered to the Text to Speech engine:
 - This is a test of the emergency evacuation system, repeat this is a test of the emergency evacuation system. /* sent by FTP agent at 10.10.10.10 at 2:14:30 pm
- **Minimize to System Tray on Close (X)** - If this option is checked, clicking the X in the upper right hand corner of the main window will minimize TTTSF to the Windows System Tray instead of closing it

Menu Options

File Menu Options

The File menu has the following option:

- **Logoff** - stops processing and presents the Logon dialog
- **Exit** - exits the TTSF Console session

Setup Menu Options

The Tools menu has the following option:

- **Folder Groups** - This option opens the [Setup Group Folders](#) dialog
- **Preferences** - This option opens the [Preferences](#) dialog
- **Support Settings**
 - **Record events** - This option records information about the operation of the TTSF Console in the TTSTFolderTracking.txt file. It should be used if instructed by Technical Support
 - **Open Support Folder** - Select this option to open the folder that contains the TTSTFolderTracking.txt

Help Menu Options

The Help Menu has the following options:

- **About** - displays the current software version

Support Information

Contacting Technical Support

For Information on contacting Technical Support, please visit our web site at:

www.digitalacoustics.com

About Us

Digital Acoustics, LLC
2340 S River Road, STE 206
Des Plaines, IL 60018
USA

Digital Acoustics®, TalkMaster®, ii3®, IP7® and UBAM® are trademarks of Digital Acoustics LLC. All other marks used are properties of their respective owners. Digital Acoustics' product designs are packaged by leading manufacturers around the world.

© 2007 - 2022 Digital Acoustics, LLC

All Rights Reserved

Index

A

About Us.....11

C

Checking Folder2

D

Delimiter String.....7

F

File Menu Options9

Folder Groups9

Folder Name2

H

Help Menu Options9

L

Logon1

O

Overview2

P

Paging Group2, 5

Password 1

Polling 7

Interval..... 7

Port 1

Preferences..... 7, 9

Preliminary Configuration Process 1

S

Save Logon ID 1

Setup Group Folders 5

Support Settings 9

T

Technical Support 11

TMEE Admin Console 1

TMEE Server 1

Txt 5

W

Windows System Tray 2

Windows Text 1

Speech 1

Notes



DIGITAL
ACOUSTICS

www.digitalacoustics.com

© Copyright 2005-2022 Digital Acoustics LLC, All Rights Reserved