



# TalkMaster FOCUS Vision

By adding the **Vision** license to TalkMaster FOCUS, all Operator Consoles can see who they are talking to by displaying industry standard IP cameras in the Operator Console. Visually verifying a guest or intruder can be the difference between safety and danger.

## Table of Contents

<b>Release Notes</b>	<b>2</b>
<b>Setup</b>	<b>3</b>
Add the Camera URL Format	3
Add the RTSP Camera	4
Associate an IP Camera with an IP Endpoint:	5
Enable the display of associated Video	6

# Release Notes

Version 5.2.6

- Updated VLC drivers to V3.0.0 to include support for H.265 Cameras

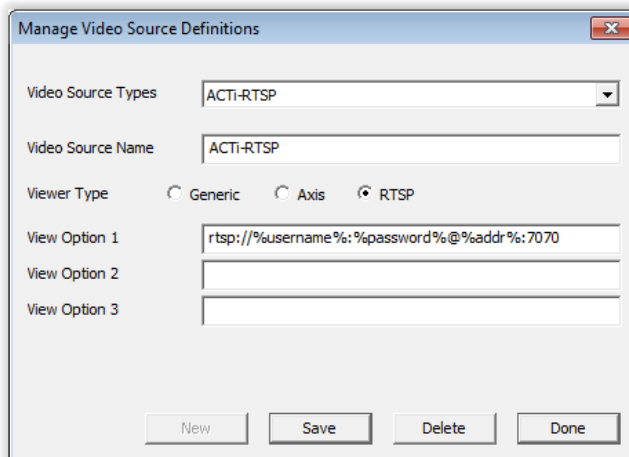
# Setup

The **TalkMaster FOCUS Vision** option includes support for viewing Axis Cameras. It can also support generic http as well as RTSP based cameras by adding additional **Video Source Types** in the **Admin Console** using menu option **Settings** → **Video Source Types**. The **Video Source Type** defines the format of the URL that is used to access a particular video camera.

## Add the Camera URL Format

In order for TalkMaster to support RTSP IP Video cameras:

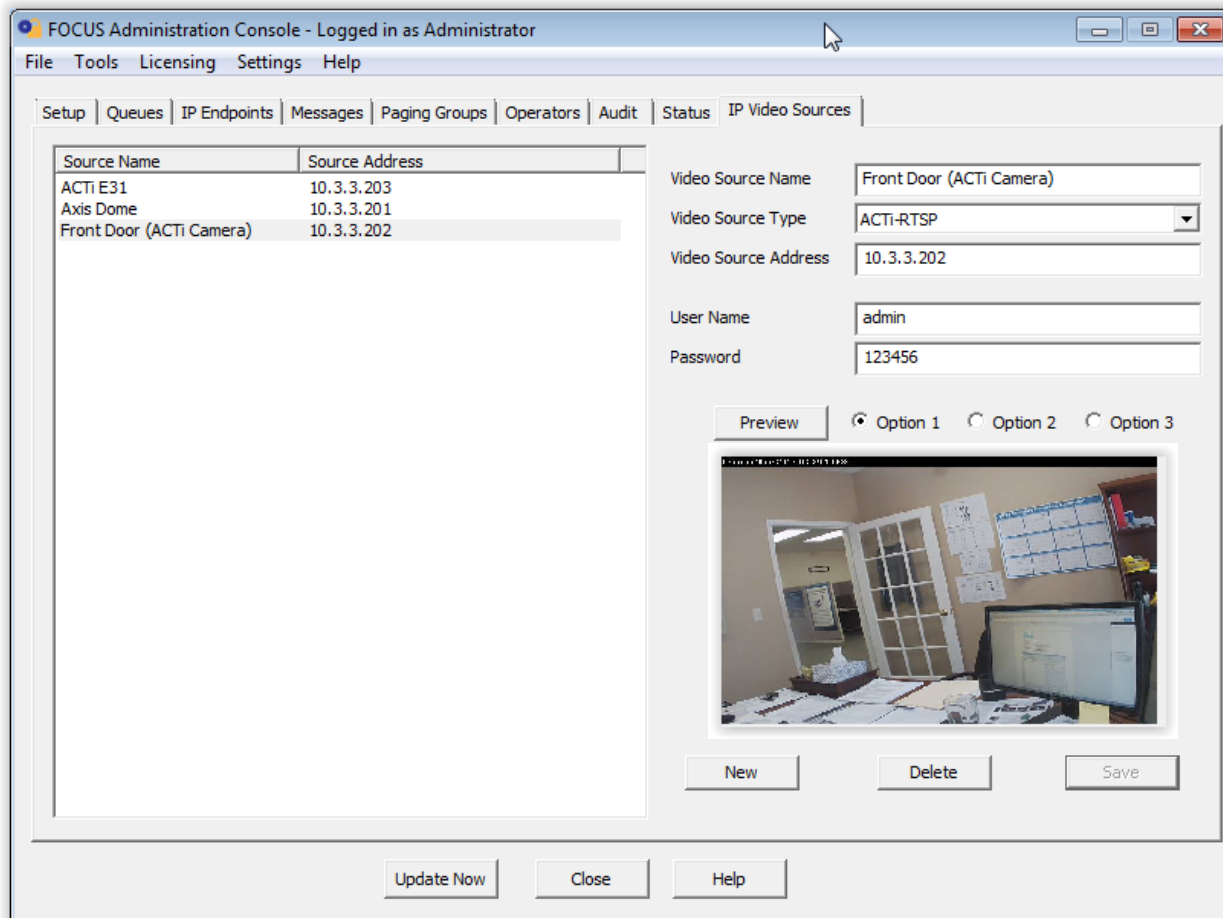
- Download and install the RTSP Viewers for the Admin Console and for each Operator Console that needs to view the RTSP Camera. The RTSP Viewers are available on the software [download page](#) of the Digital Acoustics Website
- Install the RTSP Viewer for the Admin Console on the TalkMaster Server
- Install the RTSP View for the Operator Console on any PC that the Operator Console is installed on
- After the RTSP Viewers have been installed, **RTSP** will be enabled as a **Viewer Type** in the **Settings** → **Video Source Types** when the **New** button is pressed in the Admin Console
- Enter a **Video Source Name** to identify the Vendor and Type of Camera that will be supported
- Select the **RTSP** radio button as the **Viewer Type**
- Enter up to three URLs (these are provided by the camera vendor). Substitute the following variables for IP Address, User Name and Password:
  - %addr%
  - %username%
  - %password%
- Press the **Save** button. The Video Source Name will now appear in the Video Source Type list



- Press the **Done** button

## Add the RTSP Camera

- Switch to the **IP Video Sources** tab
- Press the **New** button
- Enter a unique name to identify a particular camera
- Select the **Video Source Type** created in the previous step
- Enter the fixed **IP Address** of the camera
- Enter the **UserName** and **Password** of the camera
- Select **Preview** - wait up to 10 seconds for the viewer to load the video
- Press the **Save** button



IP Cameras can be associated with an IP Intercom. When the IP Intercom's TALK button is pressed, the Video for the associated camera will be displayed.

### Associate an IP Camera with an IP Endpoint:

- Switch to the **IP Endpoints** → **General** → **Options 3** tab
- Select the Endpoint to be associated with the camera
- Select the selected camera from the **Associated Video Source** dropdown
- Press the **Save** button

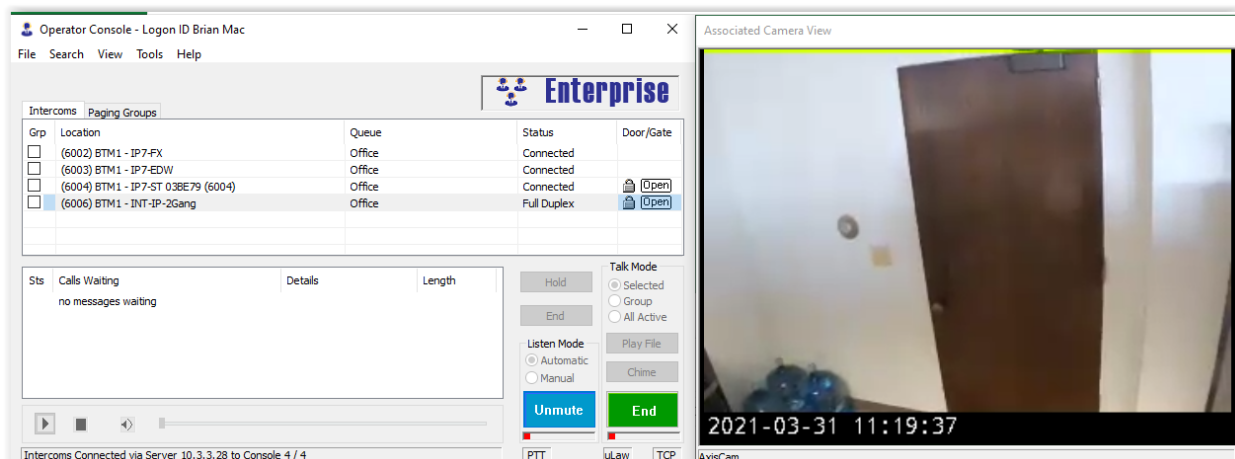
The screenshot shows the configuration interface for an IP Endpoint, specifically the 'Options 3' tab. The interface is organized into several sections:

- Queues Settings:** Contains two dropdown menus: 'Assigned Queue' set to '1st Floor' and 'Priority' set to 'Normal'.
- Input Device for Group:** A dropdown menu currently set to 'No Group Selected'.
- Enable Fast Disconnect Detection:** A checked checkbox.
- Number of connection attempts before trying Fail Forward Servers:** A text input field containing the number '6'.
- Recording Warning:** Includes an unchecked checkbox for 'Enable Recording Warning' and two text input fields for 'For 0 ms every 0 seconds'.
- Associated Video Source:** A dropdown menu with 'Front Door (ACTi Camera)' selected and highlighted in blue. A mouse cursor is pointing at the dropdown arrow.
- PTT Disabled:** An unchecked checkbox.

## Enable the display of associated Video

In each Operator Console that will display associated video:

- Select menu option **View** → **Monitored Video** → **Show Associated Video**
- Once the size and position for the Operator Console and the Video windows have been set up, select menu option **View** → **Screen Position** → **Save Current View**. The Operator Console will remember and open these saved window size and positions whenever the Operator Console is started
- The associated Video for an IP Audio Endpoint will display in the window whenever audio communication is active



## Enable the display of monitored Video

The Operator Console can also be set up to monitor video for 1 or 4 cameras at all times, not just when audio is active.

- Select menu option **View** → **Monitored Video** → **Show Monitored Video**
- Use menu option **View** → **Monitored Video** → **Configure Monitored Video** to set the number of video windows to display and the cameras to view
- Once the size and position for the Operator Console and the Video windows have been set up, select menu option **View** → **Screen Position** → **Save Current View**. The Operator Console will remember and open these saved window size and positions whenever the Operator Console is started

The screenshot displays the Operator Console interface for Logon ID Brian Mac. The interface includes a menu bar (File, Search, View, Tools, Help) and the Enterprise logo. The main area is divided into several sections:

- Intercoms/Paging Groups:** A table listing intercom groups with columns for Grp, Location, Queue, Status, and Door/Gate. The (6006) BTM1 - INT-IP-2Gang group is selected.
- Calls Waiting:** A section showing "no messages waiting" with a "Details" button and a "Length" column.
- Control Panel:** Includes buttons for Hold, End, Listen Mode (Automatic/Manual), Mute, Start, and Talk Mode (Selected, Group, All Active). There are also Play File, Chime, PTT, uLaw, and TCP buttons.
- Monitored Video:** A section displaying four video feeds from different cameras: Garage Exit, Garage, Outside Parking, and Pay Station. Each feed shows a timestamp of 2021-04-01 12:09:13.